

£295,000

Beaulieu Close, Hounslow, TW4

Galaxy Real Estate presents this 1-bed, 1-bath flat on Beaulieu Close, Hounslow, TW4. Features a bright reception, a separate kitchen, a private garden, and allocated parking. Freehold, near shops, schools, parks, and Hounslow station. Ideal for first-time buyers or investors.

Features :

Allocated Parking

Excellent Transport Links

Separate Kitchen

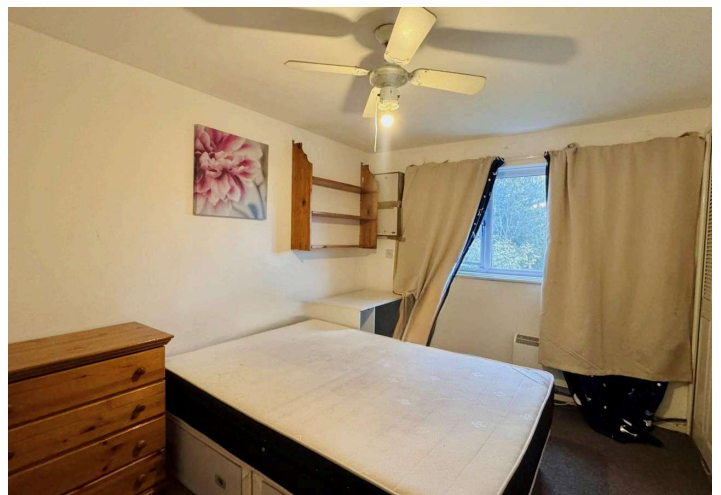
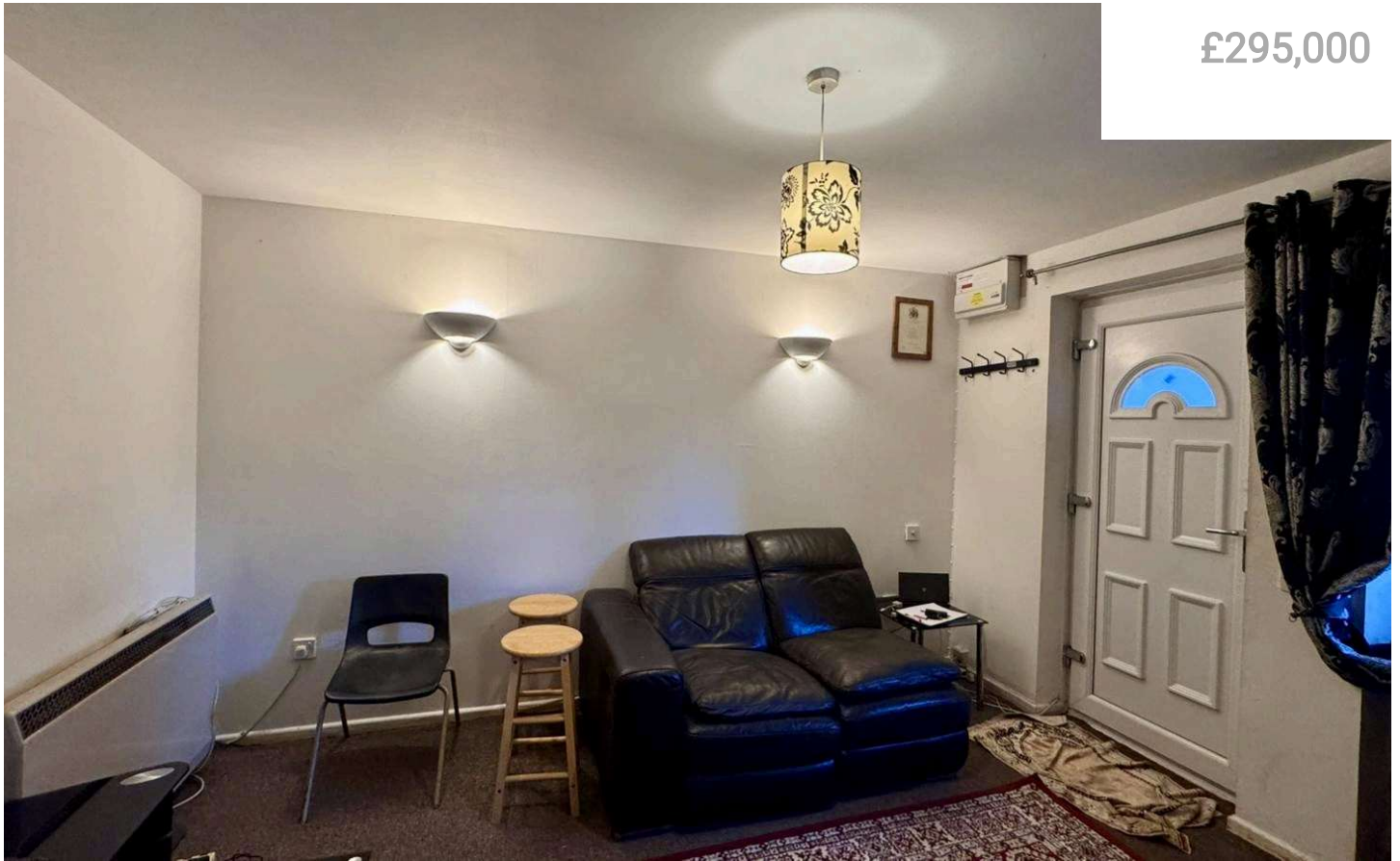
Bright reception room

Freehold Ownership

Private Back Garden

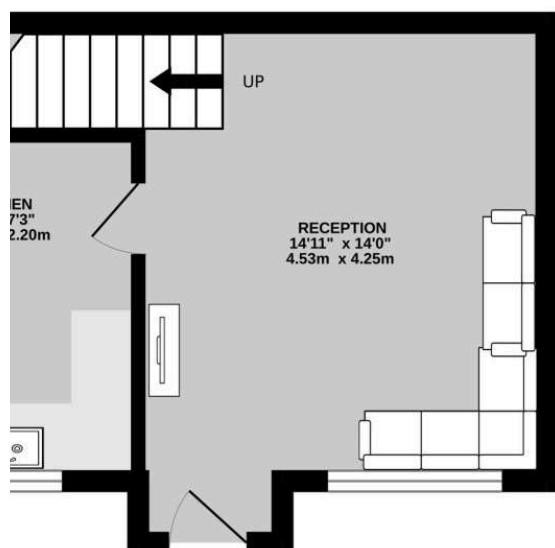
Beaulieu Close, Hounslow, TW4

£295,000



Beaulieu Close, Hounslow, TW4

GROUND FLOOR
230 sq.ft. (21.4 sq.m.) approx.



1ST FLOOR
224 sq.ft. (20.8 sq.m.) approx.



TOTAL FLOOR AREA : 454 sq.ft. (42.1 sq.m.) approx.

Whilst every attempt has been made to ensure the accuracy of the floorplan contained here, measurements of doors, windows, rooms and any other items are approximate and no responsibility is taken for any error, omission or mis-statement. This plan is for illustrative purposes only and should be used as such by any prospective purchaser. The services, systems and appliances shown have not been tested and no guarantee as to their operability or efficiency can be given.
Made with Metropix ©2025



Galaxy Real Estate presents this 1-bed, 1-bath flat on Beaulieu Close, Hounslow, TW4. Features a bright reception, a separate kitchen, a private garden, and allocated parking. Freehold, near shops, schools, parks, and Hounslow station. Ideal for first-time buyers or investors.

GALAXY REAL ESTATE

info@galaxyrealestate.co.uk

02080041111

1-3 Uxbridge Road Hayes Middlesex

UB4 0JB