



£1,150 PCM

Lady Margaret Road, Southall, UB1

Charming studio for rent in Lady Margaret Road, Southall, UB1 2. This modern property features an open plan fitted kitchen, one bedroom, and one bathroom, offering a comfortable living space for £1150.00 with water bills included. With excellent transport links, nearby amenities, and popular schools within walking distance, this studio presents a convenient and well-connected living opportunity.

Features :

Public Transport Links

Shops & Amenities Nearby

Ready To Move In

Annex Building

Annex Studio

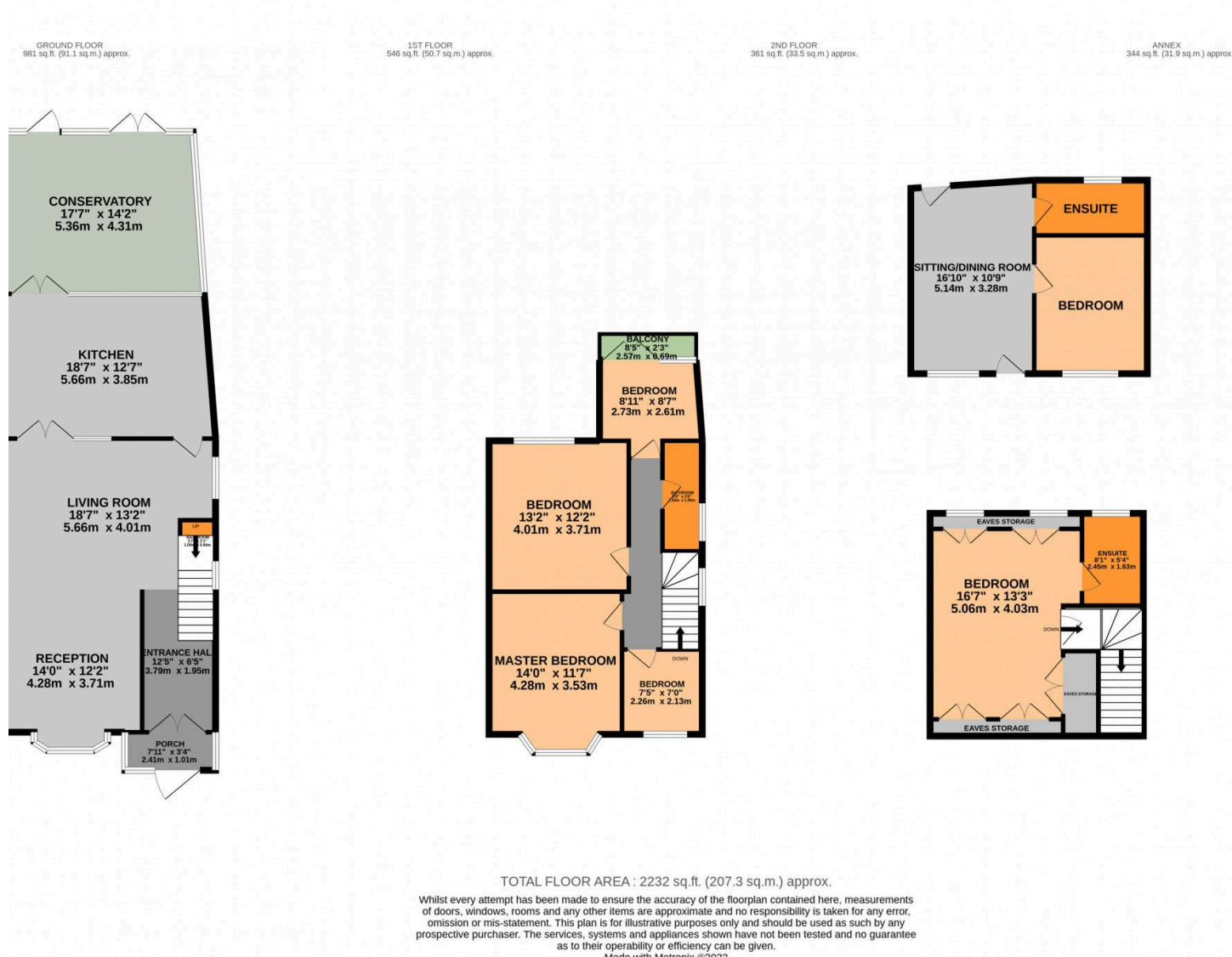
Excellent Transport Links

Water Bills Included

Lady Margaret Road, Southall, UB1



Lady Margaret Road, Southall, UB1



Charming studio for rent in Lady Margaret Road, Southall, UB1 2. This modern property features an open plan fitted kitchen, one bedroom, and one bathroom, offering a comfortable living space for £1150.00 with water bills included. With excellent transport links, nearby amenities, and popular schools within walking distance, this studio presents a convenient and well-connected living opportunity.

GALAXY REAL ESTATE

info@galaxyrealestate.co.uk

02080041111

1-3 Uxbridge Road Hayes Middlesex

UB4 0JB