

£850 PCM



Gabriel Court, Leeds, LS10

 1  1  2

Discover the epitome of modern living at Gabriel Court, Leeds. This secure, two-bedroom apartment comprises open plan kitchen living area, two bedrooms and bathroom. It boasts a gated entry, designated parking, and close proximity to public transport. With shops, restaurants, and top schools nearby, this is an exceptional opportunity for a vibrant lifestyle.

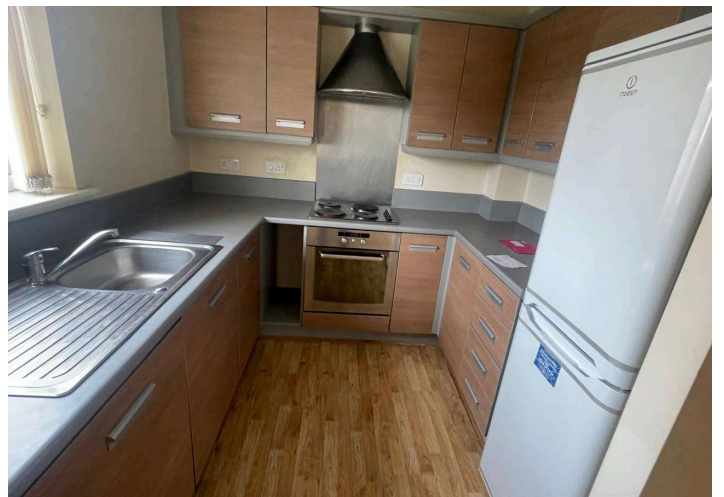
Features :

Close to public transport
Double glazing
Fitted Kitchen

Parking
Shops and amenities nearby
Un-Furnished

Gabriel Court, Leeds, LS10

£850 PCM



Gabriel Court, Leeds, LS10



LETZMOVE
Letting & Estate Agents

Discover the epitome of modern living at Gabriel Court, Leeds. This secure, two-bedroom apartment comprises open plan kitchen living area, two bedrooms and bathroom. It boasts a gated entry, designated parking, and close proximity to public transport. With shops, restaurants, and top schools nearby, this is an exceptional opportunity for a vibrant lifestyle.

Letz Move

Letz Move