

£215,000



19-21 Western Road, Southall, UB2

Galaxy Real Estate presents this 3rd-floor Southall flat with stunning views, bright open-plan living, 1 bedroom, 1 bathroom, underfloor heating, and move-in-ready condition. Close to Southall Station and local amenities. Lease: 117 years; council parking permit available.

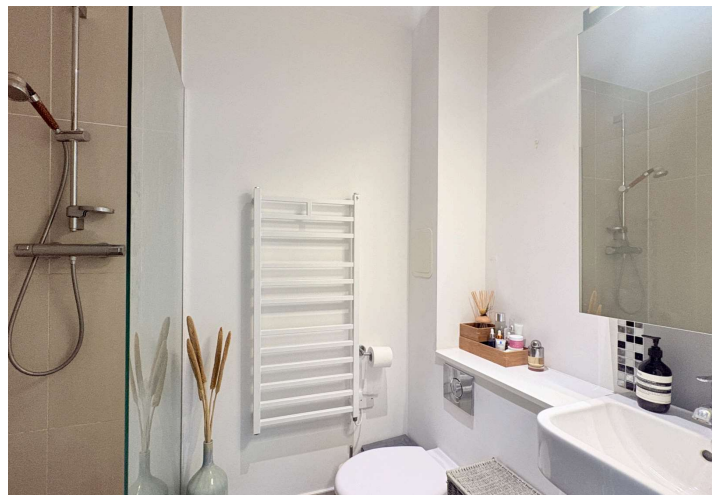
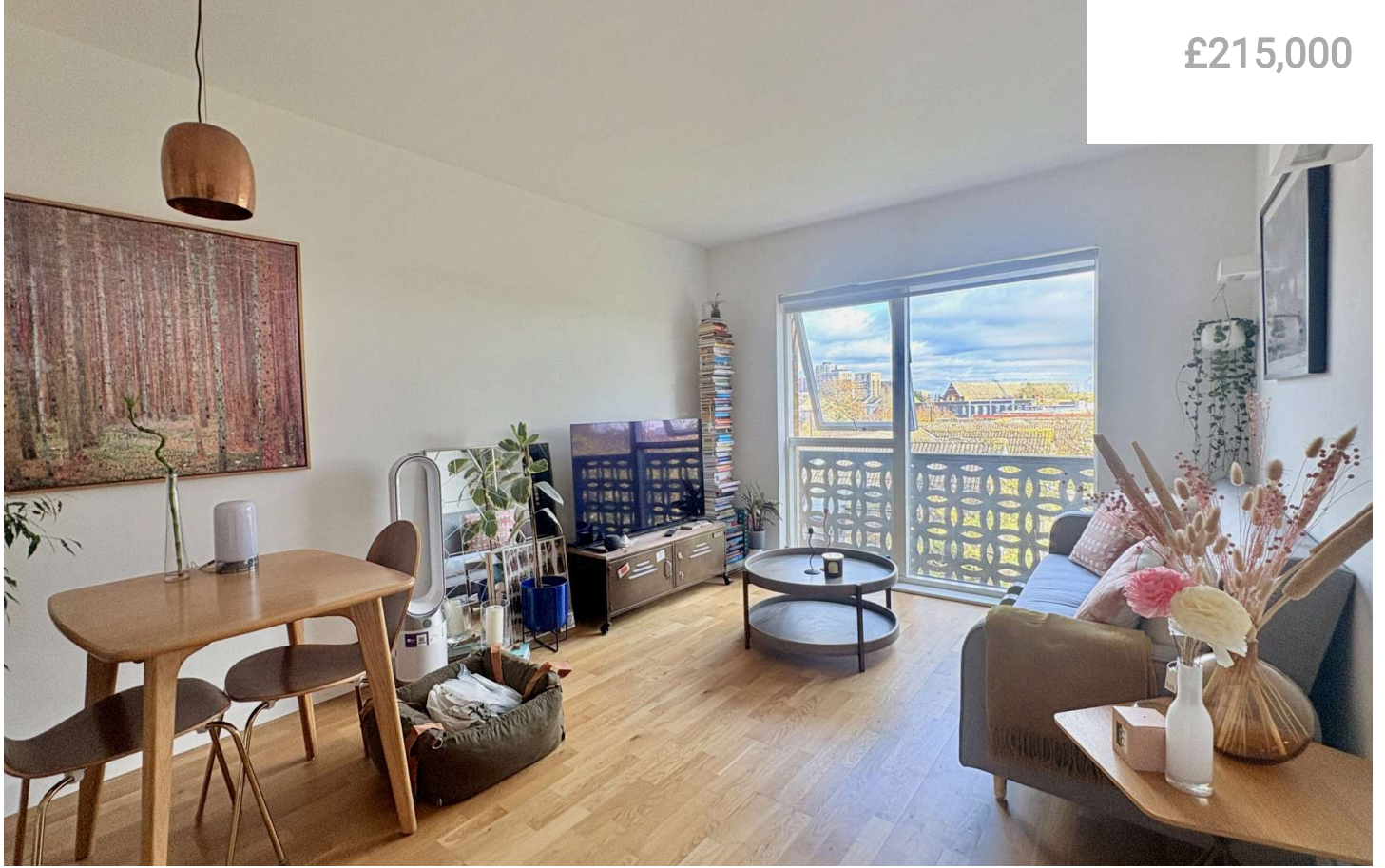
Features :

- Bright open-plan living
- Underfloor heating throughout
- One spacious bedroom
- Stunning Southall views
- Contemporary bathroom design

- Third-floor privacy guaranteed
- Move-in ready condition
- Minutes from station
- Easy access amenities

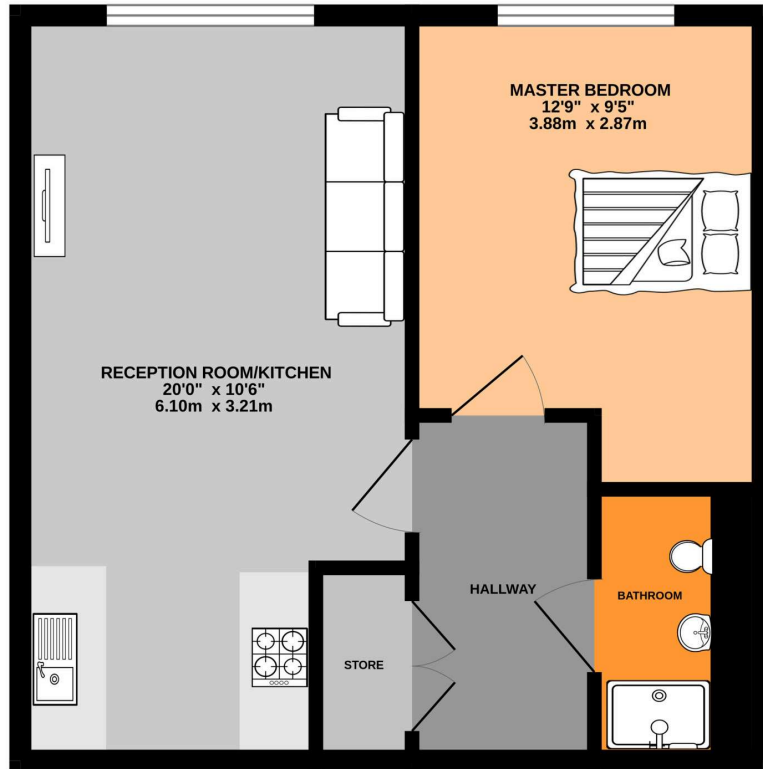
19-21 Western Road, Southall, UB2

£215,000



19-21 Western Road, Southall, UB2

3RD FLOOR
392 sq.ft. (36.4 sq.m.) approx.



TOTAL FLOOR AREA : 392 sq.ft. (36.4 sq.m.) approx.

Whilst every attempt has been made to ensure the accuracy of the floorplan contained here, measurements of doors, windows, rooms and any other items are approximate and no responsibility is taken for any error, omission or mis-statement. This plan is for illustrative purposes only and should be used as such by any prospective purchaser. The services, systems and appliances shown have not been tested and no guarantee as to their operability or efficiency can be given.
Made with Metroplan ©2025



Galaxy Real Estate presents this 3rd-floor Southall flat with stunning views, bright open-plan living, 1 bedroom, 1 bathroom, underfloor heating, and move-in-ready condition. Close to Southall Station and local amenities. Lease: 117 years; council parking permit available.

GALAXY REAL ESTATE

info@galaxyrealestate.co.uk

02080041111

1-3 Uxbridge Road Hayes Middlesex

UB4 0JB

Score	Energy rating	Current	Potential
92+	A		
81-91	B	88 B	88 B
69-80	C		
55-68	D		
39-54	E		
21-38	F		