



£320,000

## Butleigh House, Southall, UB2

Galaxy Real Estate presents a modern 1-bed, 1-bath 4th-floor flat in Butleigh House, Healum Avenue, UB2, with an open-plan kitchen/reception, balcony, lift access, and communal garden. Close to Southall Station and local amenities, perfect for first-time buyers or investors.

Score	Energy rating	Current	Potential
92+	A		
81-91	B	85 B	85 B
69-80	C		
55-68	D		
39-54	E		

## Features :

Shops & Amenities Nearby  
 Communal Garden  
 Lift Access  
 Long Leasehold

Private Balcony  
 Open-plan kitchen/living  
 One spacious bedroom

[www.galaxyrealestate.co.uk](http://www.galaxyrealestate.co.uk)

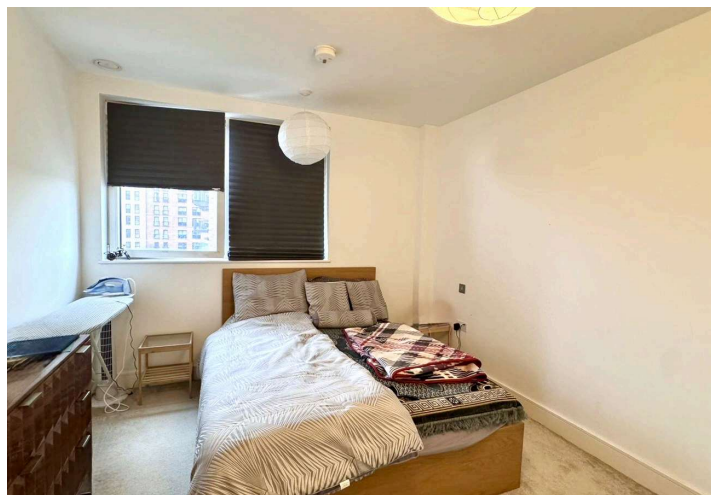
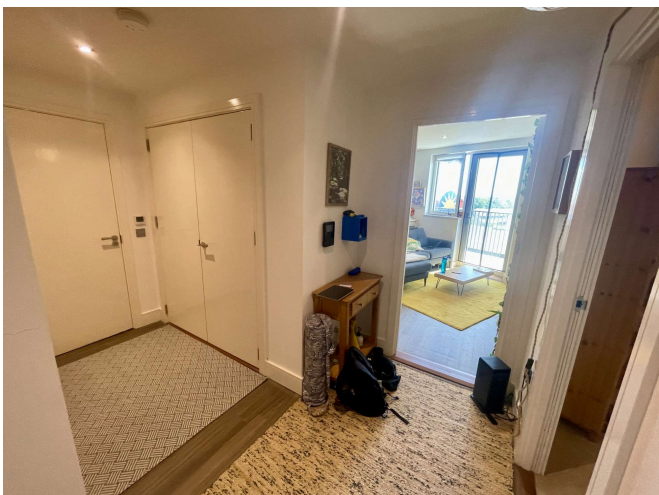
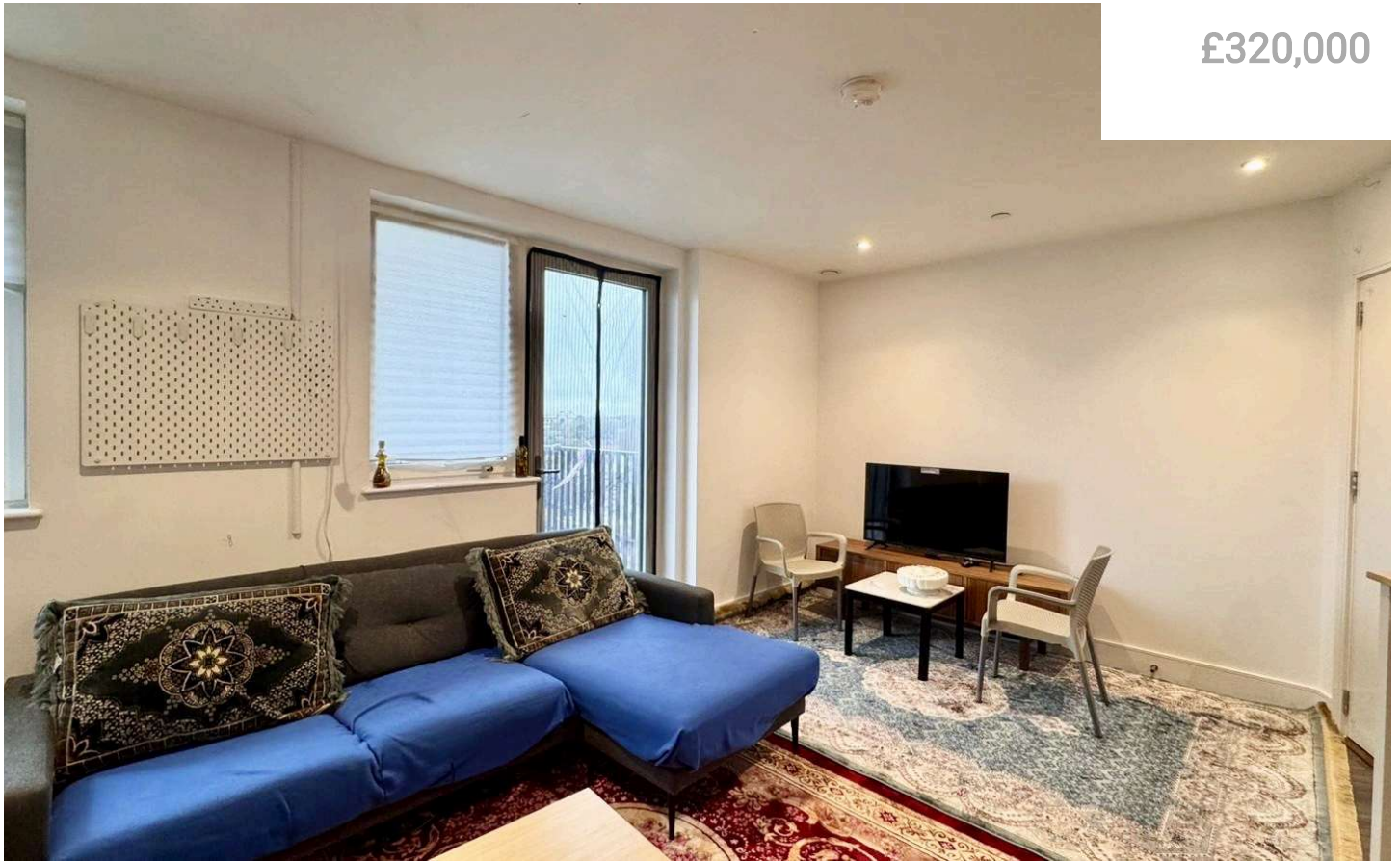
Call: 02080041111

1-3 Uxbridge road, Hayes, UB4 0JN



## Butleigh House, Southall, UB2

£320,000





Butleigh House, Southall, UB2



Galaxy Real Estate presents a modern 1-bed, 1-bath 4th-floor flat in Butleigh House, Healum Avenue, UB2, with an open-plan kitchen/reception, balcony, lift access, and communal garden. Close to Southall Station and local amenities, perfect for first-time buyers or investors.

GALAXY REAL ESTATE

info@galaxyrealestate.co.uk  
02080041111  
1-3 Uxbridge Road Hayes Middlesex  
UB4 0JB

Score	Energy rating	Current	Potential
92+	A		
81-91	B	85 B	85 B
69-80	C		
55-68	D		
39-54	E		
21-38	F		