



Excelsior Works, Hulme Hall Road, Manchester

£1,350 pcm

2 Bedroom Furnished Apartment

Description

AVAILABLE NOW! Spacious 63.9M2 / 687sqft Flat! Stylish fifth floor two-bedroom apartment in Castlefield. The bright open-plan living area, high-quality finishes, and spacious double bedrooms create a refined, comfortable home. Includes a modern spacious bathroom.

Perfectly located for easy access to Manchester city centre. Only a 3 minute walk from Cornbrook Metro link. This property delivers premium city living in one of the area's most sought-after neighbourhoods, providing easy to many amenities and fantastic transportation links.

Tenants also benefit from:

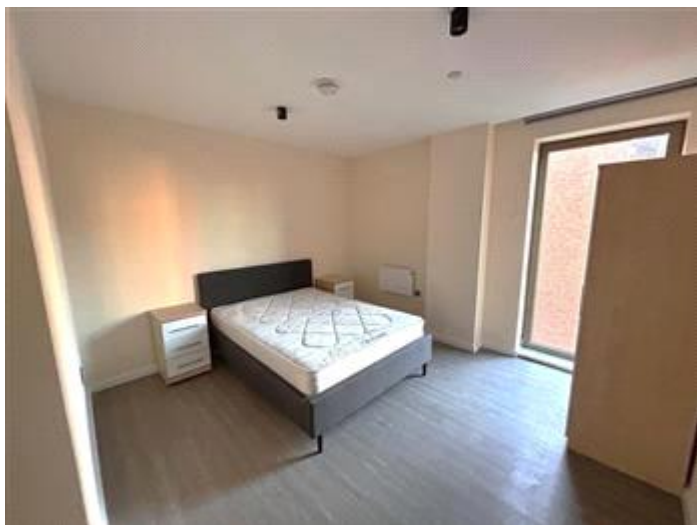
- Comunal roof garden
- Comunal work space
- Concierge 7 days a week
- Pet friendly

Council Tax Band: D (Manchester city council)

Deposit: £1,557

Holding Deposit: £311





Energy Efficiency Rating		
	Current	Potential
Very energy efficient - lower running costs		
(92-100) A		
(81-91) B	85	
(69-80) C		
(55-68) D		
(39-54) E		
(21-38) F		
(1-20) G		

Viewing by appointment only
 Property Market Hub - Property Management
 151 Fog Lane, Manchester M20 6FJ
 Tel: 0161 6355 888 Email: management@propertymarkethub.co.uk Website:
<https://www.propertymarkethub.co.uk>

