



£2,000 PCM

Nestles Avenue, Hayes, UB3

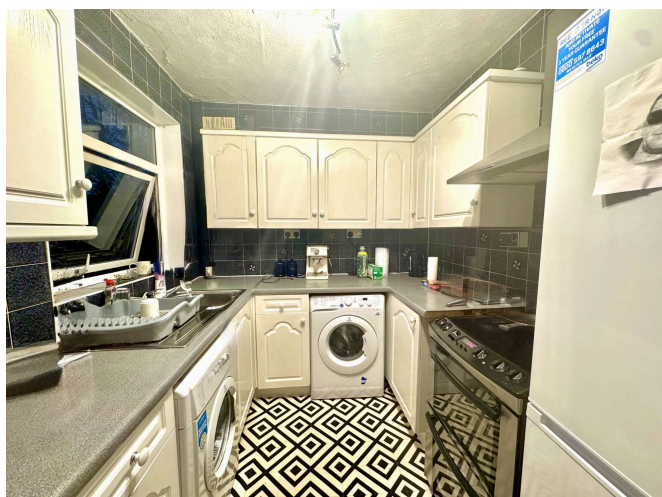
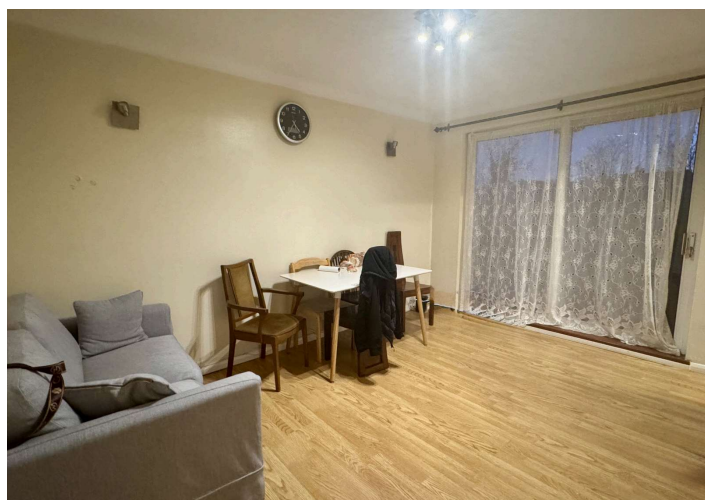
Discover a charming ground floor maisonette for rent at Nestles Avenue, Hayes, UB3 4. This 2bedroom, 1bathroom property boasts a private garden, allocated parking, just a 1min walk to Hayes and Harlington Station. Nearby supermarkets, restaurants and schools. Contact us now to arrange a viewing!

Features :

1 min walk to Elizabeth Line(Hayes and Harlington)

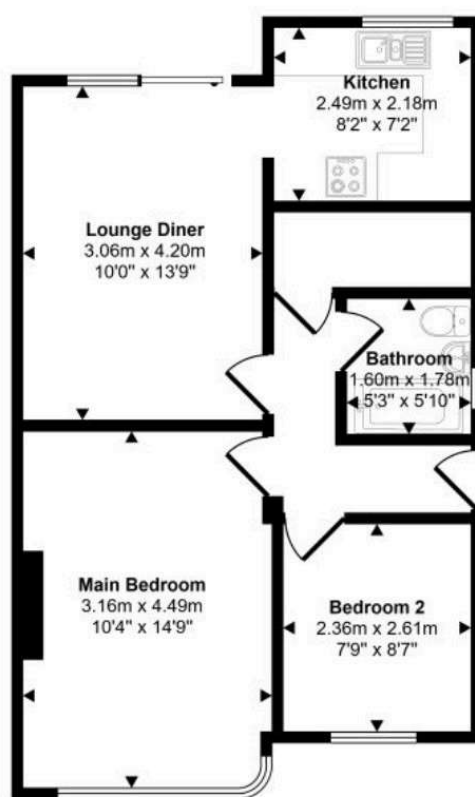
Nestles Avenue, Hayes, UB3

£2,000 PCM



Nestles Avenue, Hayes, UB3

Approx Gross Internal Area
50 sq m / 543 sq ft



Floorplan

This floorplan is only for illustrative purposes and is not to scale. Measurements of rooms, doors, windows, and any items are approximate and no responsibility is taken for any error, omission or mis-statement. Icons of items such as bathroom suites are representations only and may not look like the real items. Made with Made Snappy 360.



Discover a charming ground floor maisonette for rent at Nestles Avenue, Hayes, UB3 4. This 2bedroom, 1bathroom property boasts a private garden, allocated parking, just a 1min walk to Hayes and Harlington Station. Nearby supermarkets, restaurants and schools. Contact us now to arrange a viewing!

GALAXY REAL ESTATE

info@galaxyrealestate.co.uk

02080041111

1-3 Uxbridge Road Hayes Middlesex

UB4 0JB

