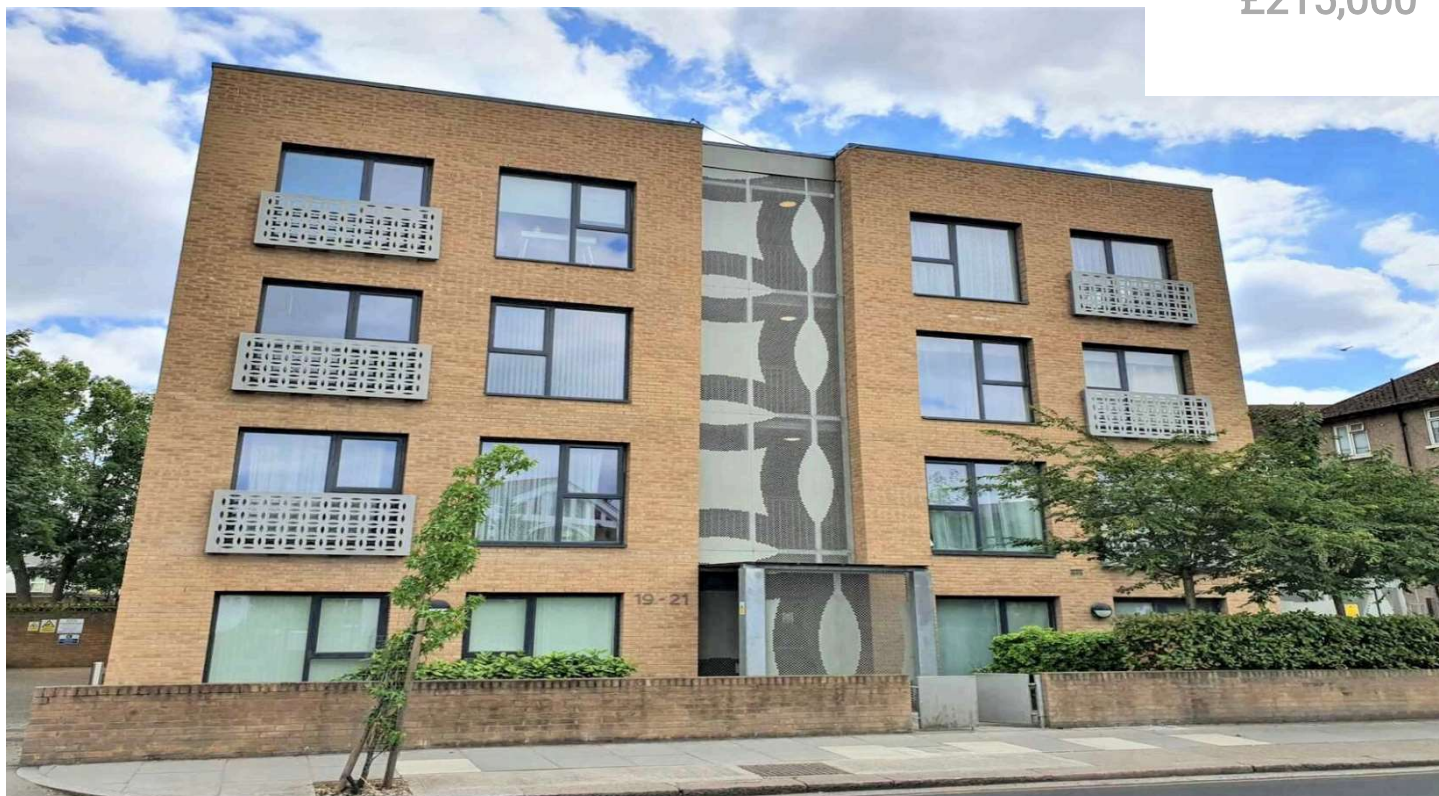


£215,000



19 - 21 Western Road, Southall, UB2

Galaxy Real Estate presents a bright second-floor flat in Southall UB2, ideal for first-time buyers or professionals, featuring open-plan living and kitchen, one bedroom, a bathroom, storage, modern finishes, underfloor heating, and excellent transport links.

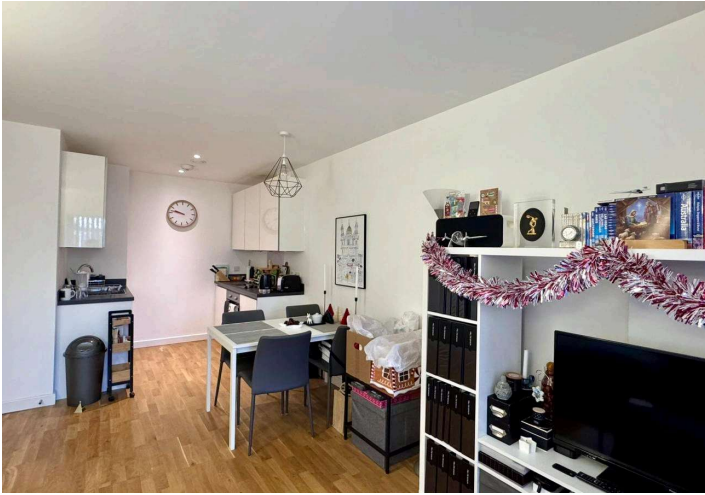
Features :

- Excellent Transport Links
- Modern Fitted Kitchen
- Underfloor Heating
- Long lease remaining

- Prime Southall location
- Spacious open-plan living
- Second-floor apartment
- Bright interiors

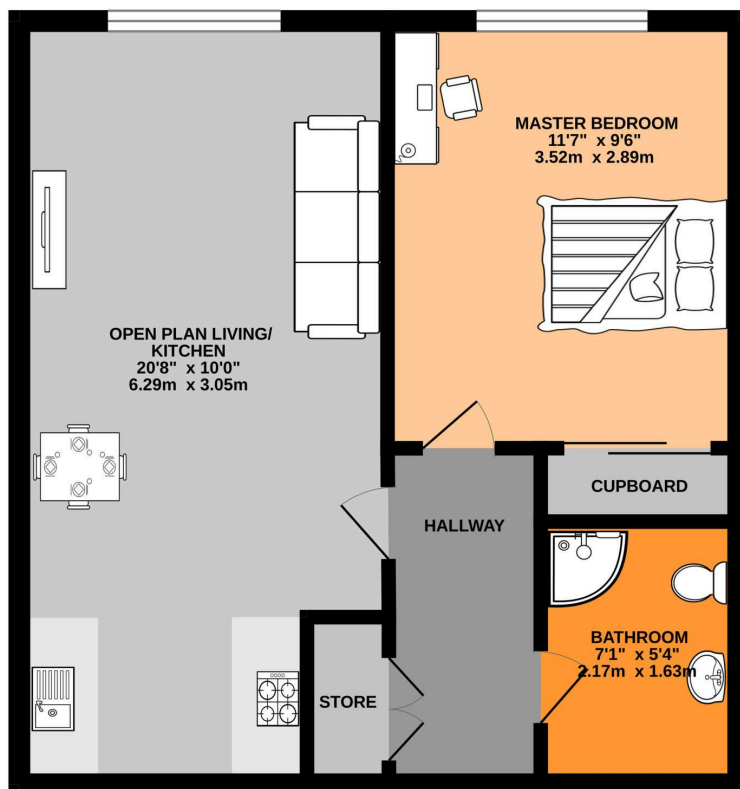
19 - 21 Western Road, Southall, UB2

£215,000



19 - 21 Western Road, Southall, UB2

SECOND FLOOR
401 sq.ft. (37.3 sq.m.) approx.



TOTAL FLOOR AREA: 401 sq.ft. (37.3 sq.m.) approx.

Whilst every attempt has been made to ensure the accuracy of the floorplan contained here, measurements of doors, windows, rooms and any other items are approximate and no responsibility is taken for any error, omission or mis-statement. This plan is for illustrative purposes only and should be used as such by any prospective purchaser. The services, systems and appliances shown have not been tested and no guarantee as to their operability or efficiency can be given.
Made with Metropix ©2025



Galaxy Real Estate presents a bright second-floor flat in Southall UB2, ideal for first-time buyers or professionals, featuring open-plan living and kitchen, one bedroom, a bathroom, storage, modern finishes, underfloor heating, and excellent transport links.

GALAXY REAL ESTATE

info@galaxyrealestate.co.uk

02080041111

1-3 Uxbridge Road Hayes Middlesex

UB4 0JB