



House - Semi-Detached

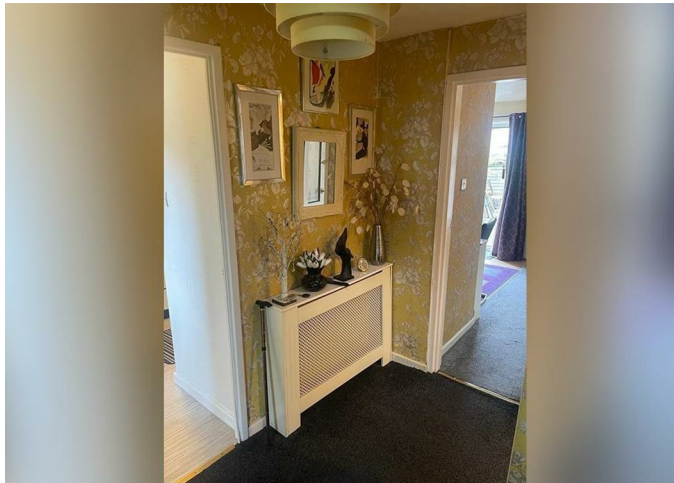
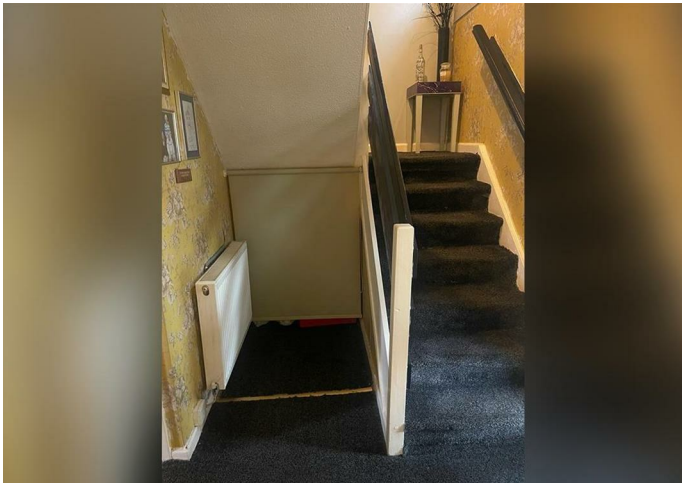
# 4 POLWORTH ROAD, MANCHESTER, M9 4AH

Per month

## £1,450 Per

### FEATURES

- Semi Detached House
- Double Size Reception Room
- Ground Floor Storage Room
- Large Enclosed Rear Garden
- 3 Bedrooms
- Large Modern Kitchen
- Family Bathroom Suite
- Small Front Garden




# 3 Bedroom House - Semi-Detached located in Manchester

Move Direct Limited is thrilled to offer a premier rental opportunity at Polworth Rd, Manchester. This exquisite semi-detached property spans 990 square feet and stands as the most valuable in the area, reflecting its high desirability. For a monthly rent of £1450, tenants can enjoy spacious living quarters in a prime location, backed by Move Direct’s exceptional service and support. Whether you’re a family or a professional, this property promises comfort and convenience, making it an ideal home. With flexible contract terms and Move Direct’s commitment to customer satisfaction, this is an opportunity not to be missed.

Call us on  
**01615 180808**  
[info@movedirect.org](mailto:info@movedirect.org)  
[www.movedirect.org](http://www.movedirect.org)

Council Tax Band  
**A**

Energy Efficiency Rating		
	Current	Potential
Very energy efficient - lower running costs		
(92 plus) <b>A</b>		
(81-91) <b>B</b>		
(69-80) <b>C</b>		
(55-68) <b>D</b>		
(39-54) <b>E</b>		
(21-38) <b>F</b>		
(1-20) <b>G</b>		
Not energy efficient - higher running costs		
England & Wales		EU Directive 2002/91/EC 

Agents Note: Whilst every care has been taken to prepare these particulars, they are for guidance purposes only. All measurements are approximate and are for general guidance purposes only and whilst every care has been taken to ensure their accuracy, they should not be relied upon and potential buyers are advised to recheck the measurements.

