

£2,999 PCM

Swan Road, Feltham, TW13

Discover luxurious living in this brand new, fully furnished semi-detached house on Swan Road, Feltham. With four bedrooms, two bathrooms, and a modern open-plan kitchen reception room, this property offers convenience and comfort. Close to schools, supermarkets, restaurants, parks, and leisure facilities, it presents an exceptional opportunity for a high-quality lifestyle in a vibrant area. Don't miss out on this fantastic chance to make this beautiful house your new home!

Features :

Driveway

Fully Furnished

Shops & Amenities Nearby

Ready To Move In

Gas Central Heating

Brand New House

Annex Storage

Modern Open Plan Kitchen Reception Room

Downstairs Bedroom

Large Garden

Downstairs W/C

Loft with en-suite.

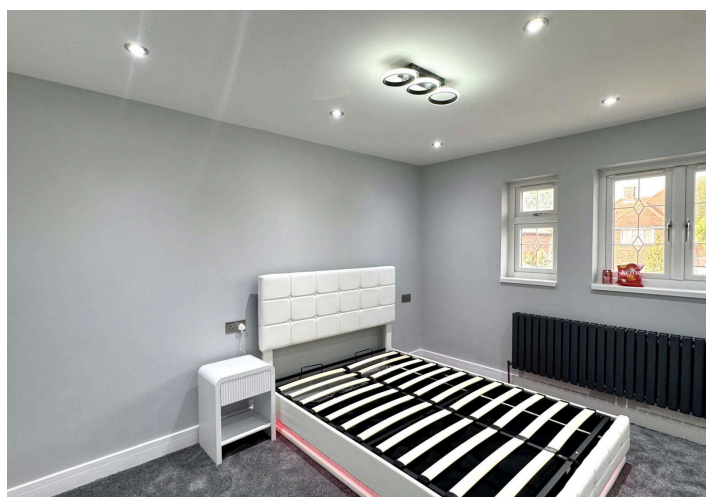
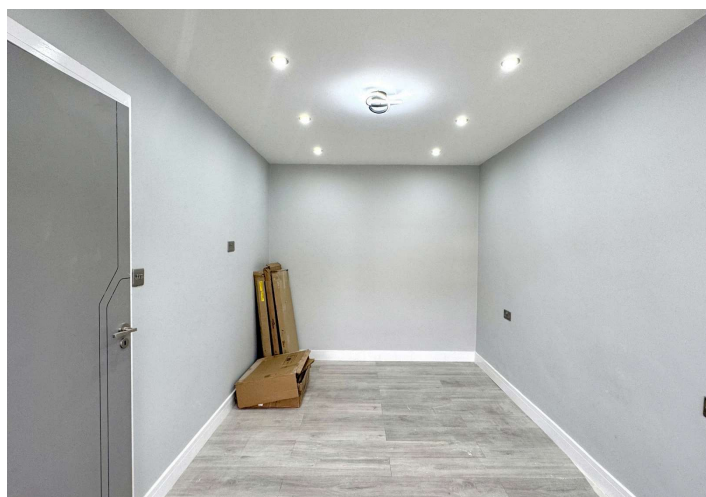
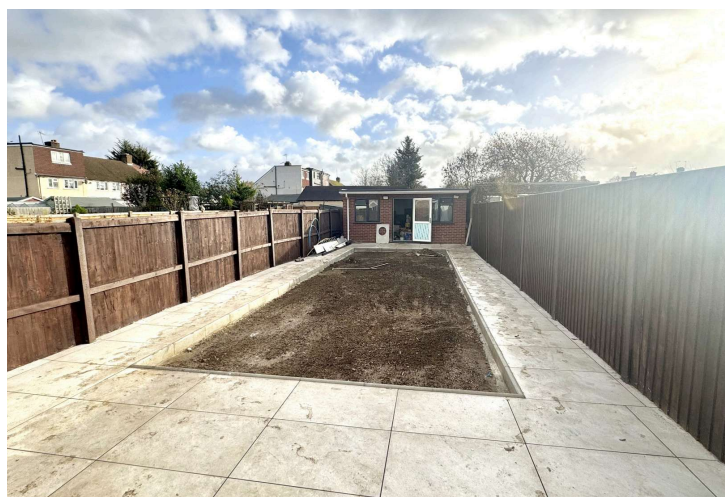
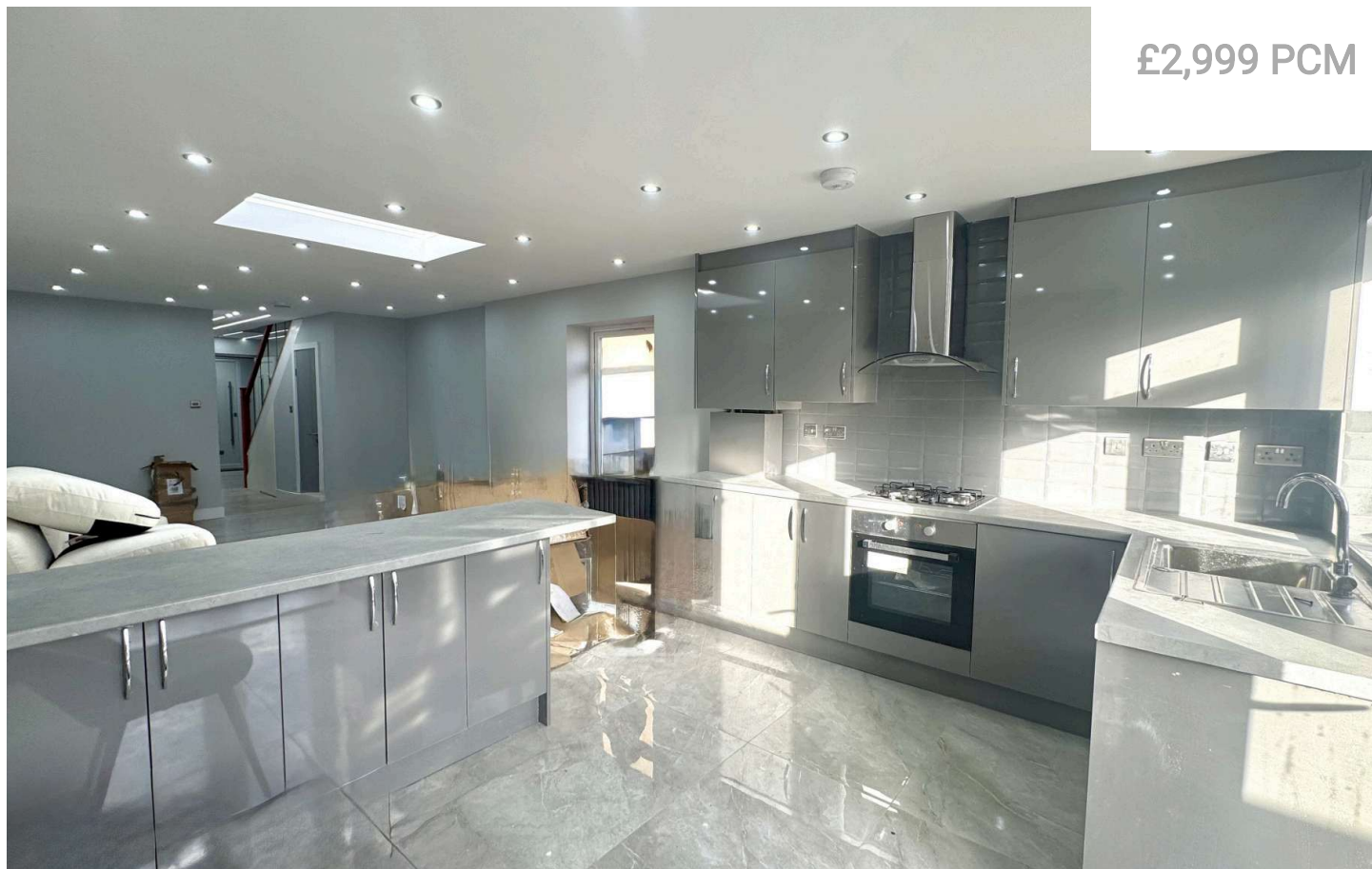
www.galaxyrealestate.co.uk

Call:02080041111

1-3 Uxbridge road, Hayes, UB4 0JN

Swan Road, Feltham, TW13

£2,999 PCM



Swan Road, Feltham, TW13



Discover luxurious living in this brand new, fully furnished semi-detached house on Swan Road, Feltham. With four bedrooms, two bathrooms, and a modern open-plan kitchen reception room, this property offers convenience and comfort. Close to schools, supermarkets, restaurants, parks, and leisure facilities, it presents an exceptional opportunity for a high-quality lifestyle in a vibrant area. Don't miss out on this fantastic chance to make this beautiful house your new home!

GALAXY REAL ESTATE

info@galaxyrealestate.co.uk

02080041111

1-3 Uxbridge Road Hayes Middlesex

UB4 0JB