



£210,000

Freehold

Shakespeare Crescent, Manchester, M30

Discover this charming 3-bedroom semi-detached house for sale on Shakespeare Crescent, Manchester, M30 0. Priced at £210,000.00, it features a fitted kitchen, double glazing, and is just moments away from Christ Church Cofe Primary School (0.21km), New Park High School (0.36km), and Lewis Street Primary School (0.42km). With supermarkets, dining options, public transport, and a range of amenities nearby, this property offers a comfortable and convenient lifestyle in a vibrant community.

Features :

Close To Transport

Double glazing

Fitted Kitchen

Shops & Amenities

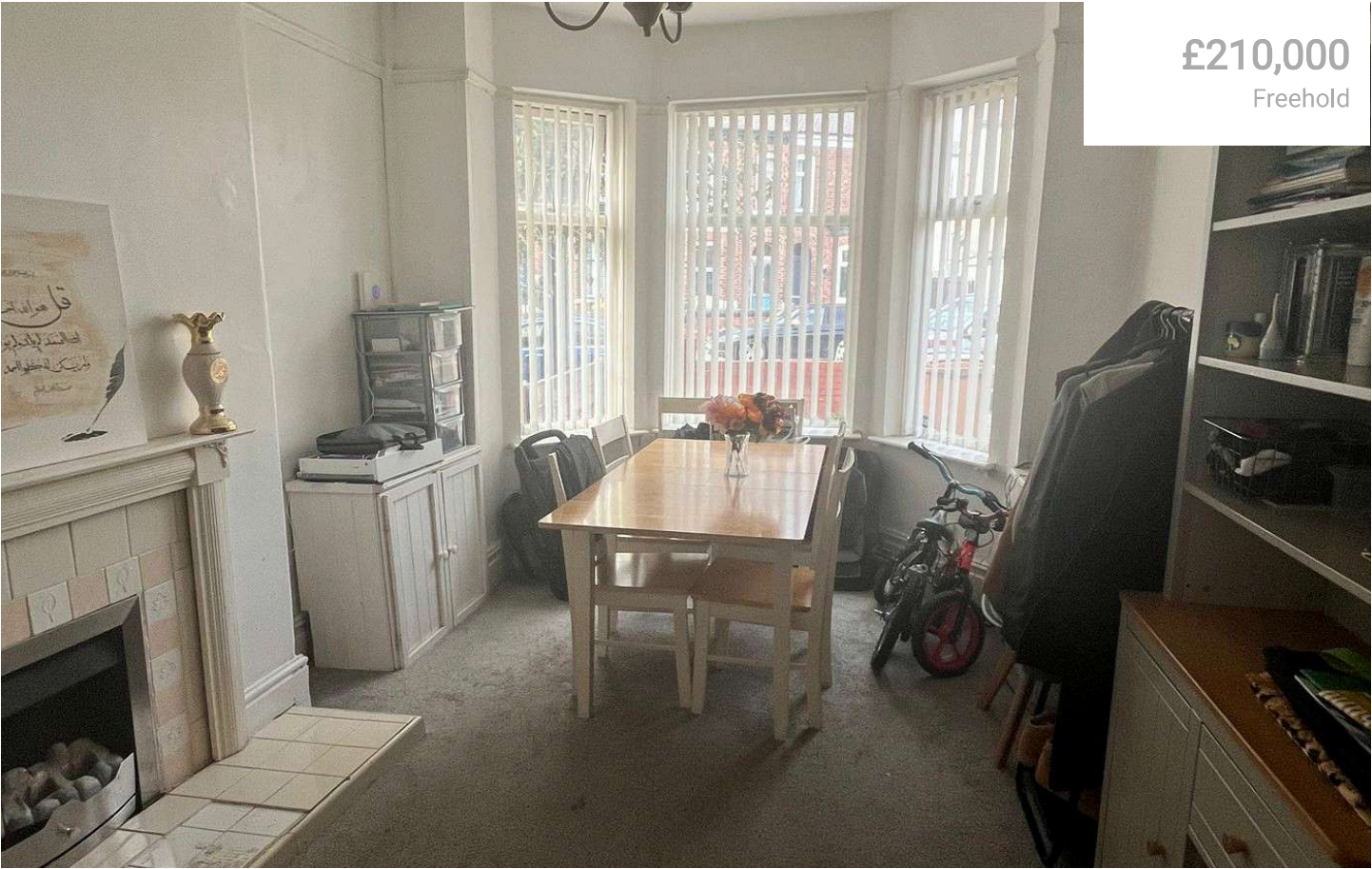
Close to Schools

www.propertyolutionsgb.co.uk

Call: 0161 492 0495

8b Bury Old Road, Manchester, M8 9JN

Shakespeare Crescent, Manchester, M30



£210,000
Freehold



Shakespeare Crescent, Manchester, M30



Discover this charming 3-bedroom semi-detached house for sale on Shakespeare Crescent, Manchester, M30 0. Priced at Â£210,000.00, it features a fitted kitchen, double glazing, and is just moments away from Christ Church Cofe Primary School (0.21km), New Park High School (0.36km), and Lewis Street Primary School (0.42km). With supermarkets, dining options, public transport, and a range of amenities nearby, this property offers a comfortable and convenient lifestyle in a vibrant community.

PSGBN Ltd

PSGBN Ltd