



£600,000

## Ranelagh Road, Southall, UB1

Galaxy Real Estate presents a spacious property on Ranelagh Road, Southall, UB1, featuring 3 bedrooms, 2 bathrooms, a reception/dining area, a separate kitchen, a lounge, a rear annex, a paved garden, and a driveway. Close to shops, schools, parks, and excellent transport links.

### Features :

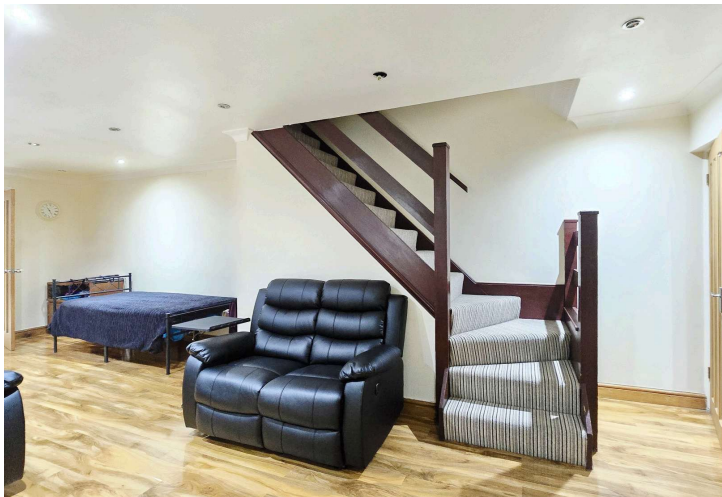
Modern Fitted Kitchen  
Spacious Reception Room  
Driveway for two cars  
Prime Southall location  
Three generous bedrooms

Comfortable lounge space  
Two contemporary bathrooms  
Rear annex included  
Paved garden area



Ranelagh Road, Southall, UB1

£600,000



# Ranelagh Road, Southall, UB1



TOTAL FLOOR AREA : 1196 sq.ft. (111.1 sq.m.) approx.

Whilst every attempt has been made to ensure the accuracy of the floorplan contained here, measurements of doors, windows, rooms and any other items are approximate and no responsibility is taken for any error, omission or mis-statement. This plan is for illustrative purposes only and should be used as such by any prospective purchaser. The services, systems and appliances shown have not been tested and no guarantee as to their operability or efficiency can be given.  
Made with Metropix ©2025



Galaxy Real Estate presents a spacious property on Ranelagh Road, Southall, UB1, featuring 3 bedrooms, 2 bathrooms, a reception/dining area, a separate kitchen, a lounge, a rear annex, a paved garden, and a driveway. Close to shops, schools, parks, and excellent transport links.

## GALAXY REAL ESTATE

[info@galaxyrealestate.co.uk](mailto:info@galaxyrealestate.co.uk)

02080041111

1-3 Uxbridge Road Hayes Middlesex

UB4 0JB