

£1,899 PCM

Barge Drive, Southall, UB2

Discover modern living at its finest in this brand-new 2-bedroom, 1-bathroom apartment for rent at Barge Drive, Southall, UB2 4. With a modern open-plan kitchen reception room, allocated parking, and a garden, this first floor apartment offers convenience and comfort. Enjoy easy access to public transport, supermarkets, restaurants, schools, and essential amenities, making it an ideal choice for professionals and small families. Don't miss out on this opportunity to experience vibrant living in a thriving community.

Features :

Garden

Ready To Move In

Gas Central Heating

First Floor

Juliet Balcony

Open Plan Kitchen/ Living Area

Ensuite Bedroom

Additional storage room

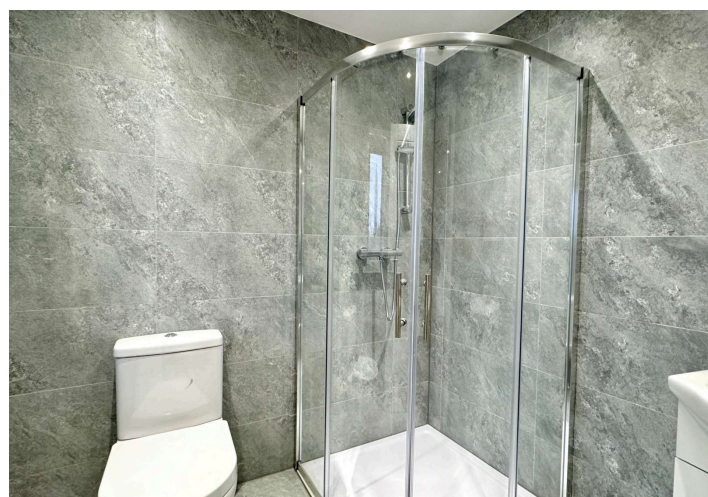
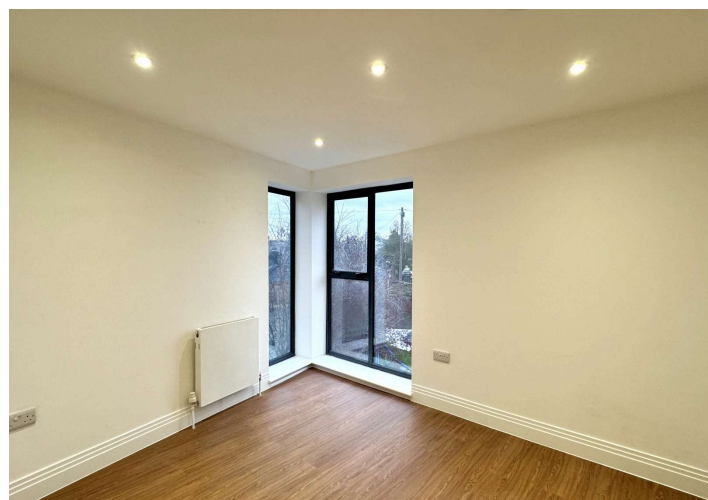
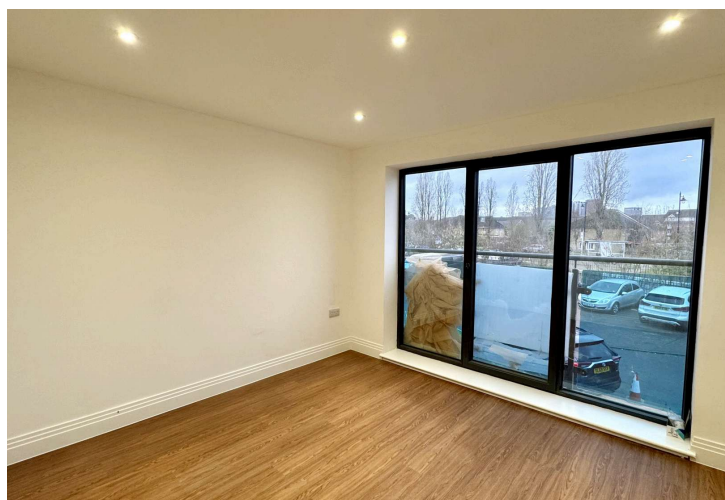
www.galaxyrealestate.co.uk

Call:02080041111

1-3 Uxbridge road, Hayes, UB4 0JN

Barge Drive, Southall, UB2

£1,899 PCM



Barge Drive, Southall, UB2



Discover modern living at its finest in this brand-new 2-bedroom, 1-bathroom apartment for rent at Barge Drive, Southall, UB2 4. With a modern open-plan kitchen reception room, allocated parking, and a garden, this first floor apartment offers convenience and comfort. Enjoy easy access to public transport, supermarkets, restaurants, schools, and essential amenities, making it an ideal choice for professionals and small families. Don't miss out on this opportunity to experience vibrant living in a thriving community.

GALAXY REAL ESTATE

info@galaxyrealestate.co.uk

02080041111

1-3 Uxbridge Road Hayes Middlesex

UB4 0JB