

LEASEHOLD



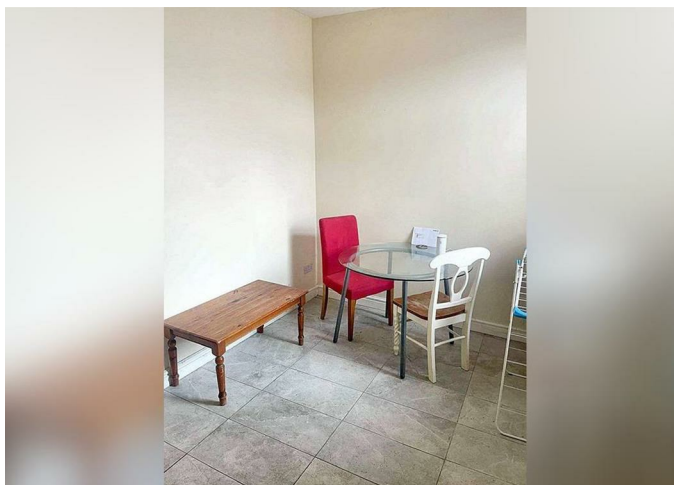
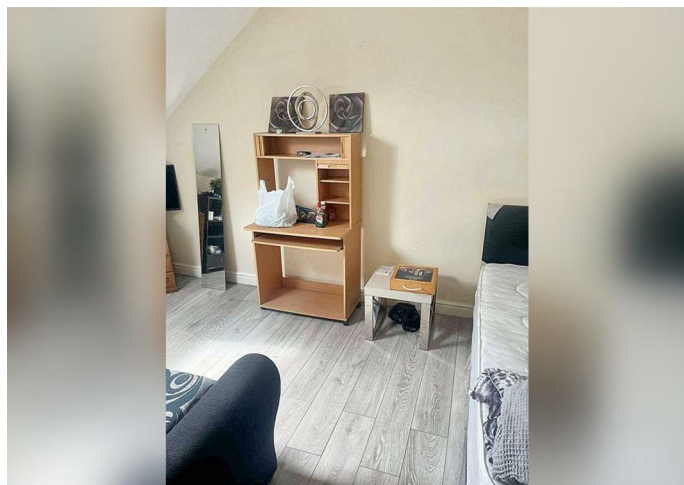
House - Mid Terrace

**18 DOUGILL STREET,
BOLTON, BL1 5JY**

Offers over

£190,000

FEATURES



2 Bedroom House - Mid Terrace located in Bolton

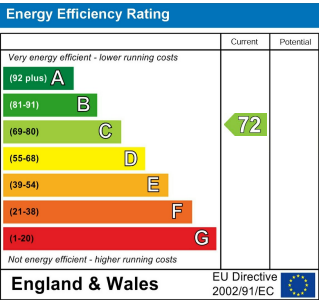
Introducing this charming 2-bedroom house located on Dougill Street in Bolton (BL1). This property boasts a good condition and features a back yard and two reception rooms, perfect for enjoying the outdoors.

Situated in a convenient location in Bolton, residents will have easy access to local amenities, shops, and restaurants. The nearby transport links make commuting a breeze, with the town centre just a stone's throw away.

This property is ideal for those looking for a cozy home with a warm and inviting atmosphere. The two bedrooms offer plenty of space for a small family or professionals looking for a comfortable living space. The well-maintained bathroom adds to the overall appeal of this lovely home.

Call us on
01615 180808
info@movedirect.org
www.movedirect.org

Council Tax Band
A



Agents Note: Whilst every care has been taken to prepare these particulars, they are for guidance purposes only. All measurements are approximate and are for general guidance purposes only and whilst every care has been taken to ensure their accuracy, they should not be relied upon and potential buyers are advised to recheck the measurements.

