



Excelsior Works, Hulme Hall Road, Manchester

£1,400 pcm

FULLY FURNISHED TWO BEDROOM CITY CENTRE FLAT

Description

A stunning 7th-floor apartment in the sought-after Excelsior Works development, Castlefield (70.3 sqm / 756.7 sqft).

This spacious home offers two double bedrooms, a bright open-plan living/dining area with floor-to-ceiling windows, and a high-spec kitchen featuring Bosch integrated appliances. The master bedroom includes an en-suite, with a stylish main bathroom serving the second bedroom.

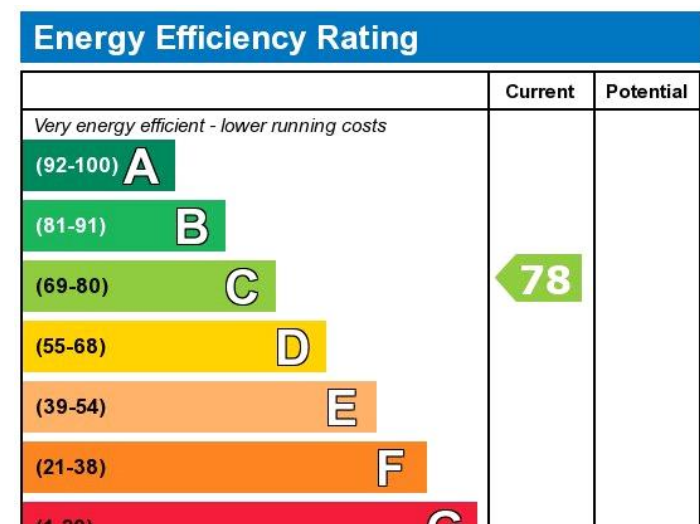
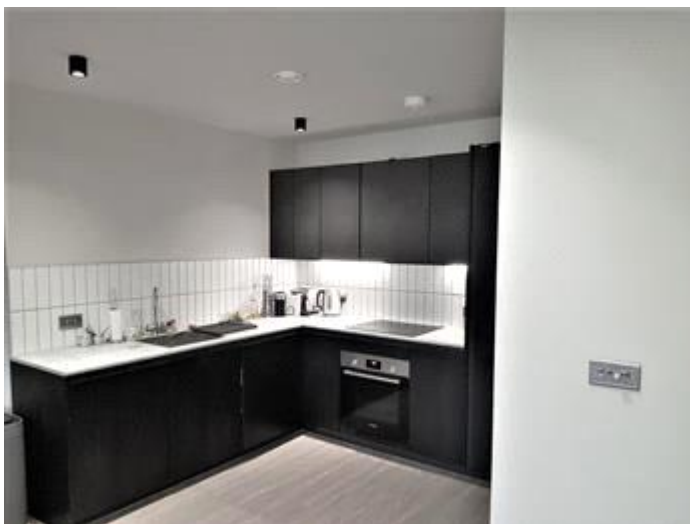
Residents benefit from a concierge service, hotel-style reception, communal lounge, rooftop terrace with panoramic city views and secure cycle storage.

Council Tax Band: E (Manchester city council)

Deposit: £1,700

Holding Deposit: £340





Viewing by appointment only
 Property Market Hub - Property Management
 151 Fog Lane, Manchester M20 6FJ
 Tel: 0161 6355 888 Email: management@propertymarkethub.co.uk Website:
<https://www.propertymarkethub.co.uk>

