



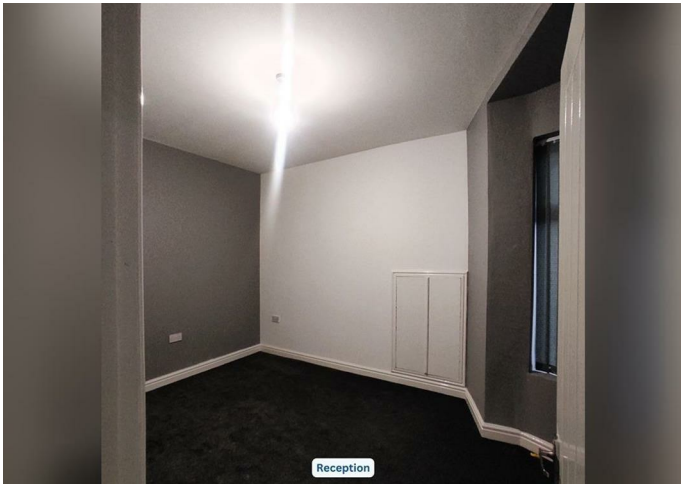
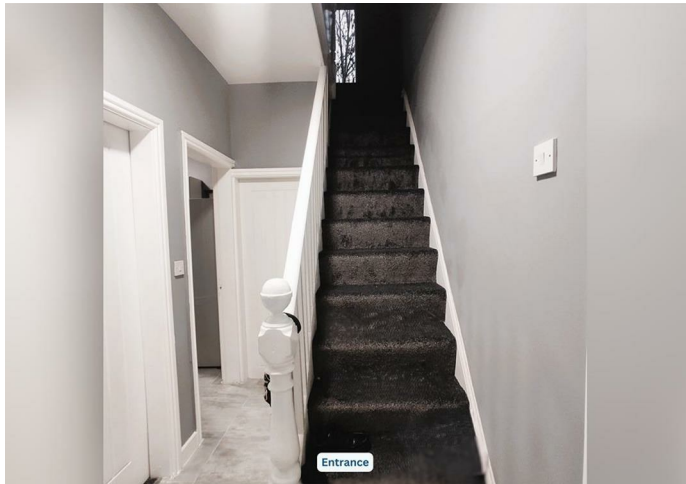
House - Semi-Detached

58 BARLOW ROAD,  
LEVENSHULME, M19  
3EF

Per month

£1,700 Per

FEATURES



# 3 Bedroom House - Semi-Detached located in Levenshulme

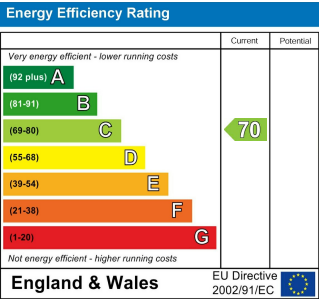
Discover this delightful semi-detached three-bedroom, two-receptions and two-bathroom property nestled on Barlow Road in the bustling neighbourhood of Levenshulme. Situated on the ground floor, this part-furnished house features corner garden area, back yard and central heating for your comfort.

Conveniently located in a vibrant community, this home offers on-street parking for easy access. Explore the array of local amenities nearby, including shops, cafes, and restaurants, adding to the appeal of the area.

Ideal for a long-term let, this property is perfect for families or professionals seeking a comfortable and well-connected home. With a minimum contract of six months, this residence is not suitable for students.

Call us on  
**01615 180808**  
[info@movedirect.org](mailto:info@movedirect.org)  
[www.movedirect.org](http://www.movedirect.org)

Council Tax Band  
**A**



Agents Note: Whilst every care has been taken to prepare these particulars, they are for guidance purposes only. All measurements are approximate and are for general guidance purposes only and whilst every care has been taken to ensure their accuracy, they should not be relied upon and potential buyers are advised to recheck the measurements.

